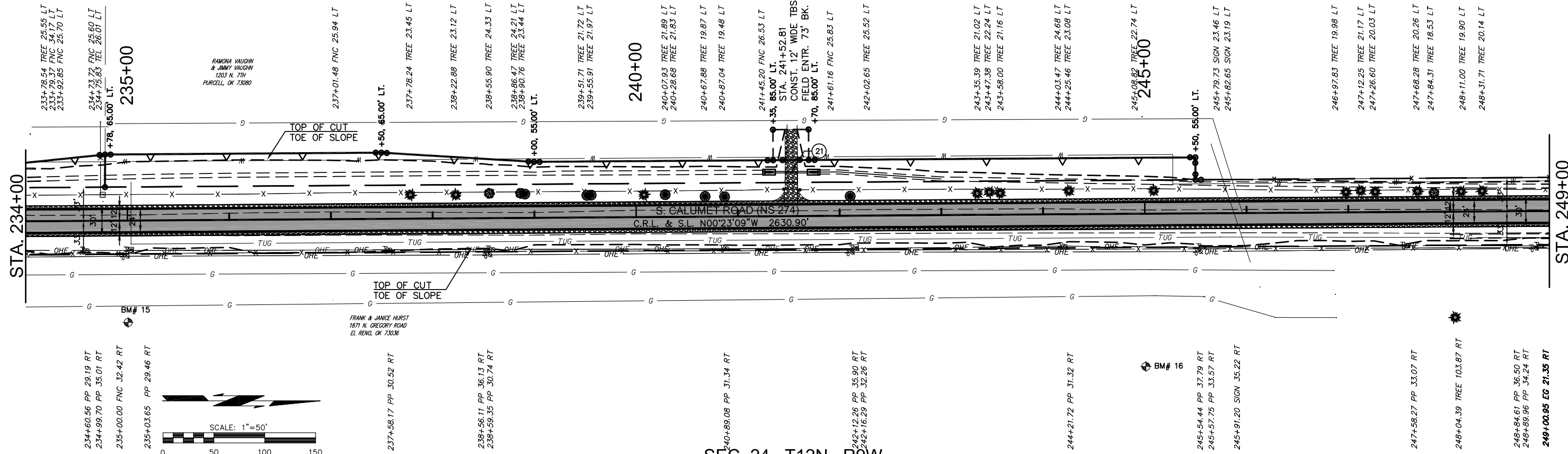
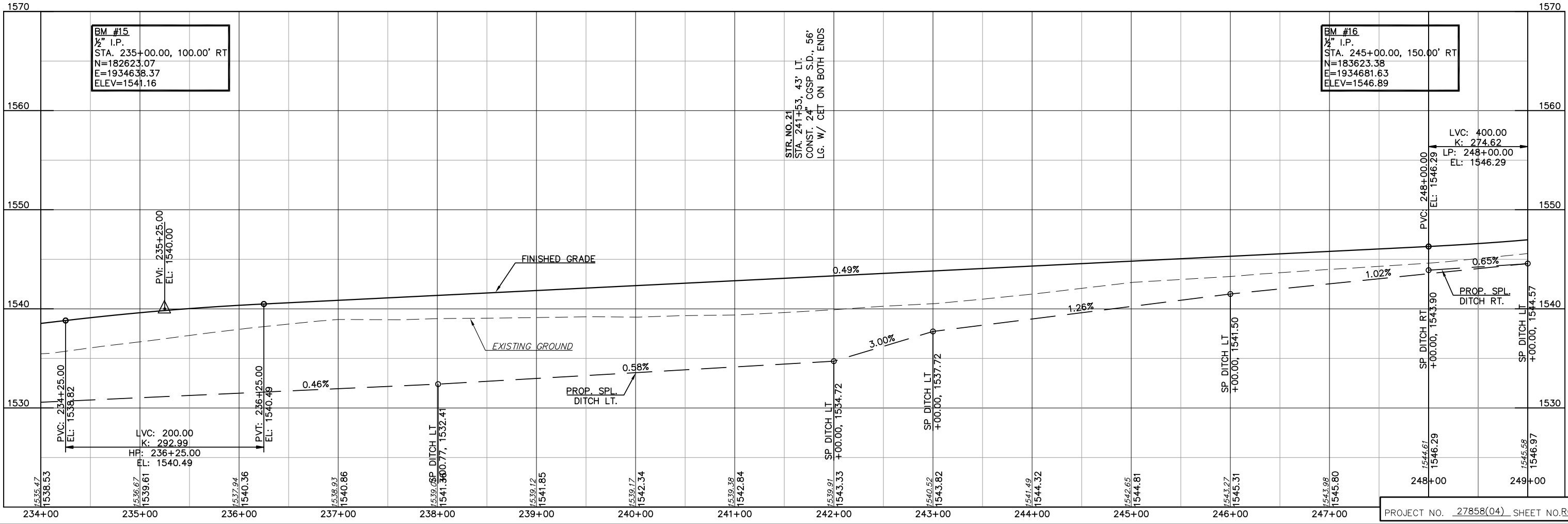


SEC. 23, T12N, R9W



SEC. 24, T12N, R9W



BM #15  
1/2" I.P.  
STA. 235+00.00, 100.00' RT  
N=182623.07  
E=1934638.37  
ELEV=1541.16

BM #16  
1/2" I.P.  
STA. 245+00.00, 150.00' RT  
N=183623.38  
E=1934681.63  
ELEV=1546.89

STR. NO. 21  
STA. 241+53.43' LT.  
CONST. 24" CGSP S.D., 56'  
LG. W/ CET ON BOTH ENDS

PLOTED: Tuesday, September 05, 2017 @ 03:55PM N:\1645-Columet-Bd-Corridor\_County\Drawings\1645PR.dwg